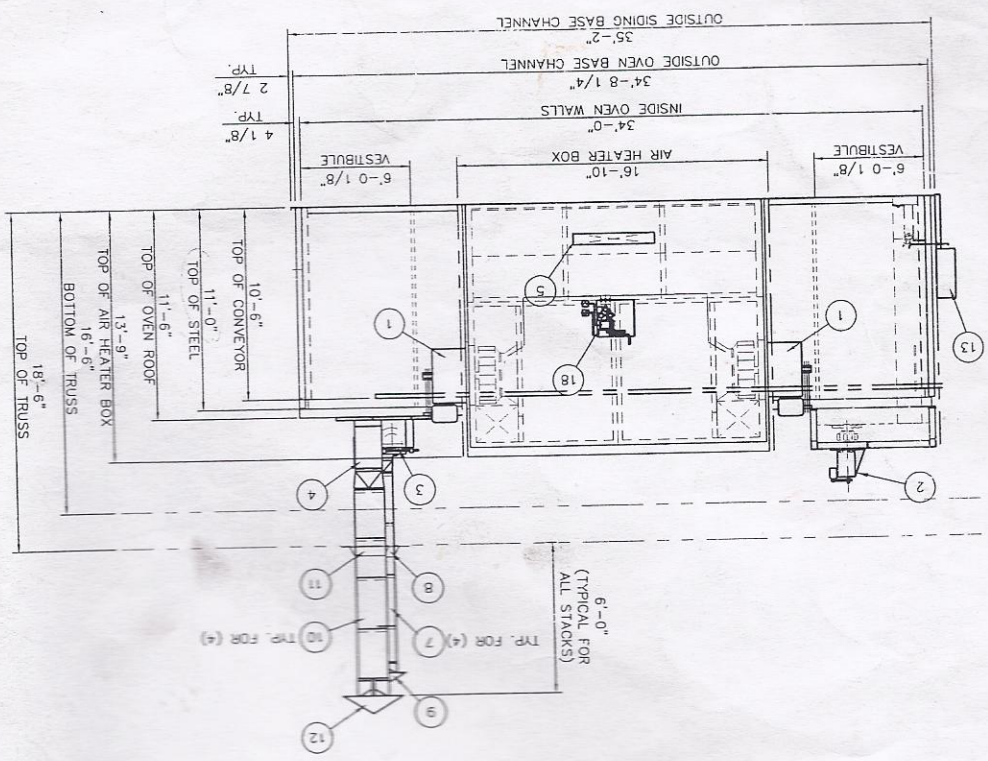


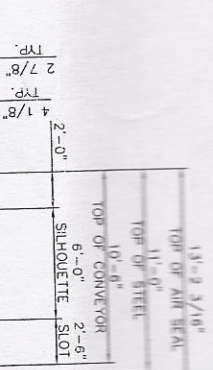
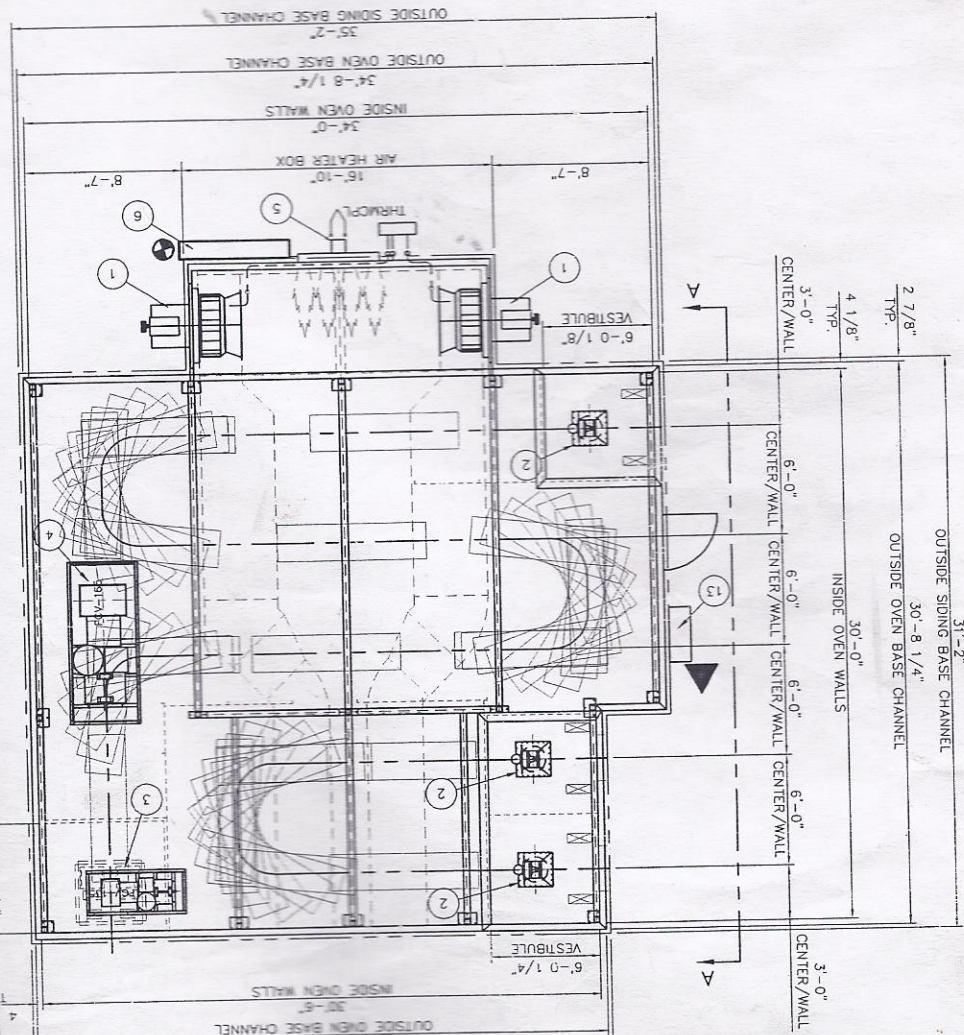
SECTION A-A

OVE
 OPE
 TME
 CIR
 EX
 AIR
 BU
 BTU

ELEVATION VIEW



PLAN VIEW



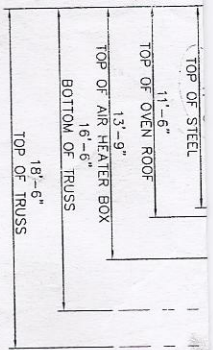
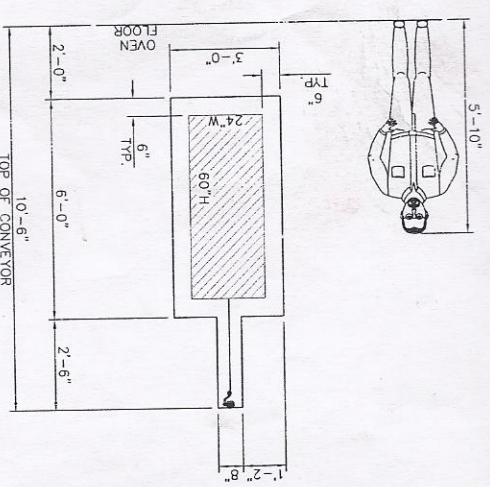
2
 5-
 VES
 TYP.
 2 7/8"
 4 1/8"
 2'-0"

DESIGNED BY	SBS
DESIGNED BY	JAMES BRANCH
DATE	04/08/03
SCALE	3/16" = 1'-0"
TITLE	
JOB NO.	6825-0423

OVEN DATA	DRY-OFF OVEN	CURE OVEN	CONVEYOR
OPERATING TEMP.	450 F.	450 F.	TYPE: ENCLOSED
TIME PER ZONE	10 MIN	30 MIN	FPM: 3-9 (3 NOM)
CIRC. FAN VOLUME	N/A	CFM	C/C: 10'-0"
EXHAUST FAN VOL.	N/A	CFM	LBS./HR: 5,000
AIR SEAL FAN(S)	2,700 CFM	2,700 CFM	LBS./HANGER: 100
BURNER RATING	4.0 MIL. BTU	N/A	
BTU/HR REQ'D	3.0 MIL. BTU/HR	N/A	

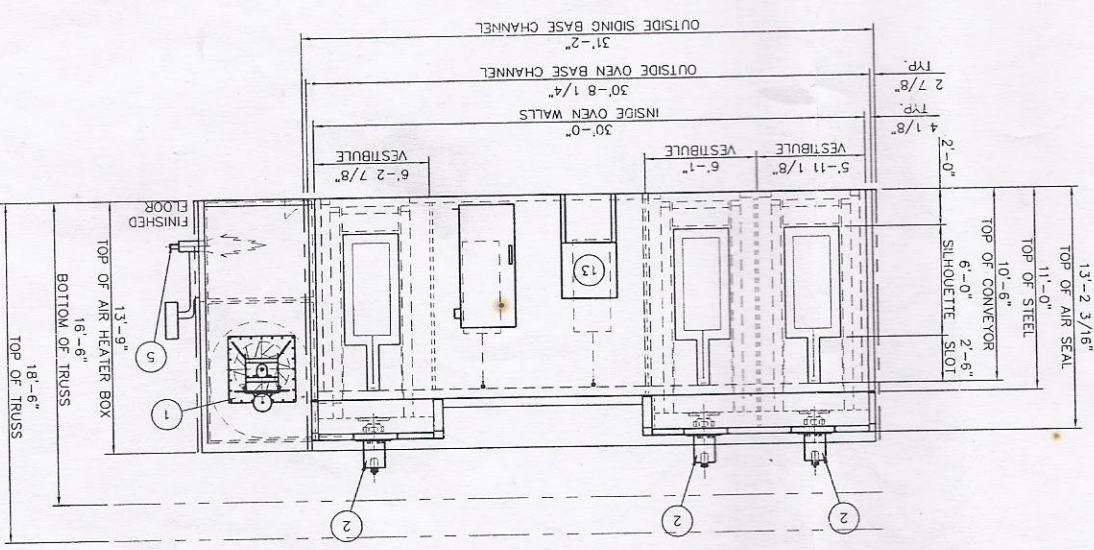
ITEM	QTY	DESCRIPTION
14	1	REMOTE DEVICE ENCLOSURE (2 FAN)
13	1	OVEN CONTROL PANEL
12	1	CHINA CAP FOR 18" DUCT - 18"
11	1	ROOF FLANGE FOR 18" DUCT (BY
10	4	18" DUCT X 36" LONG - 18 GA.
9	1	CHINA CAP FOR 12" DUCT - 18"
8	1	ROOF FLANGE FOR 12" DUCT (BY
7	4	12" DUCT X 36" LONG - 18 GA.
6	1	2" GAS TRAIN
5	1	MAXON BURNER 4.0 MILLION BTU
4	1	OVEN PURGE FAN (FCV-165) @ 4.2
3	1	EXHAUST FAN @ 2,693 CFM
2	3	AIR SEAL FAN (BCPL-135) @ 2,700
1	1	RECIRCULATION FAN (BCPL-365) @

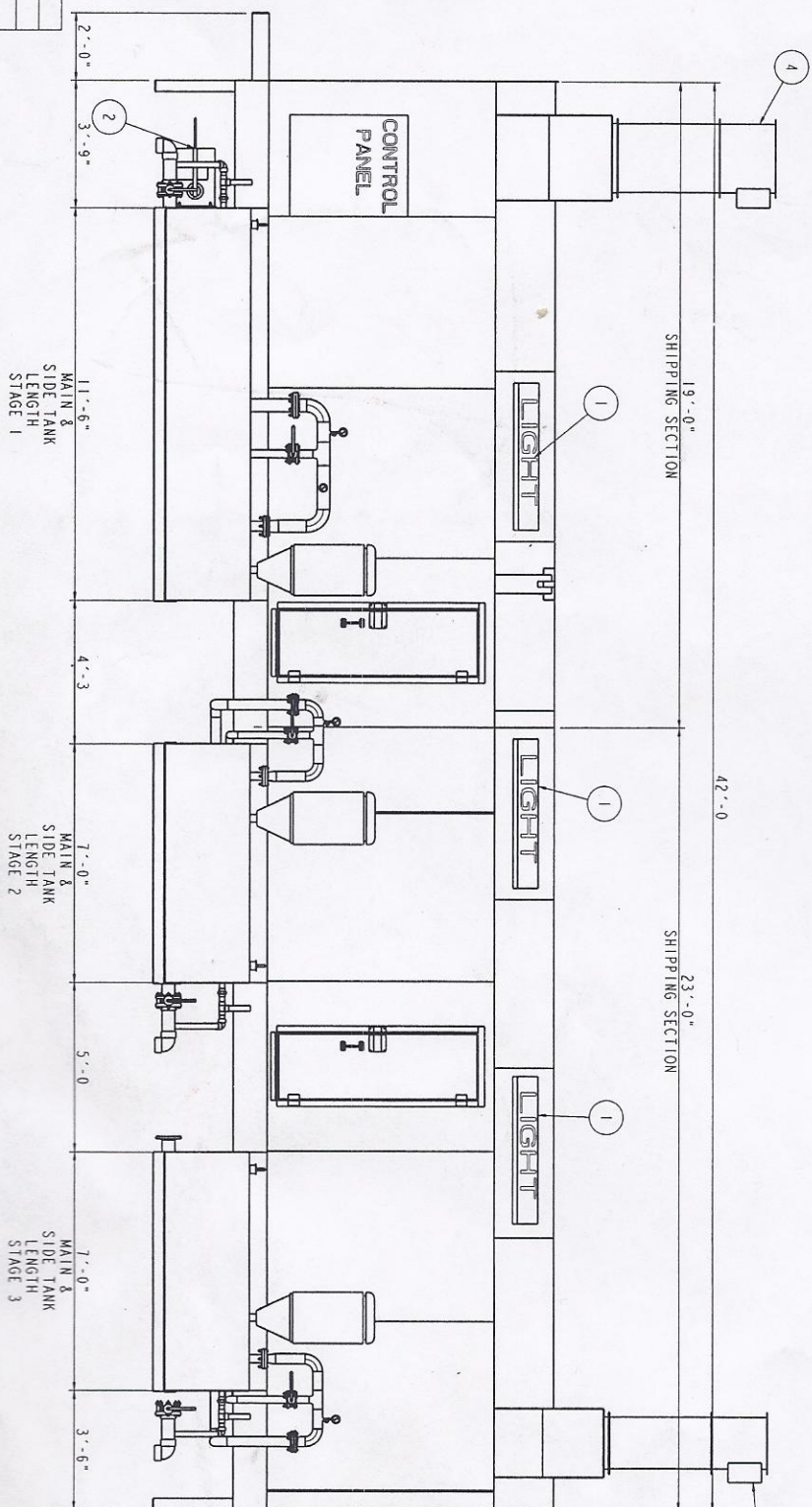
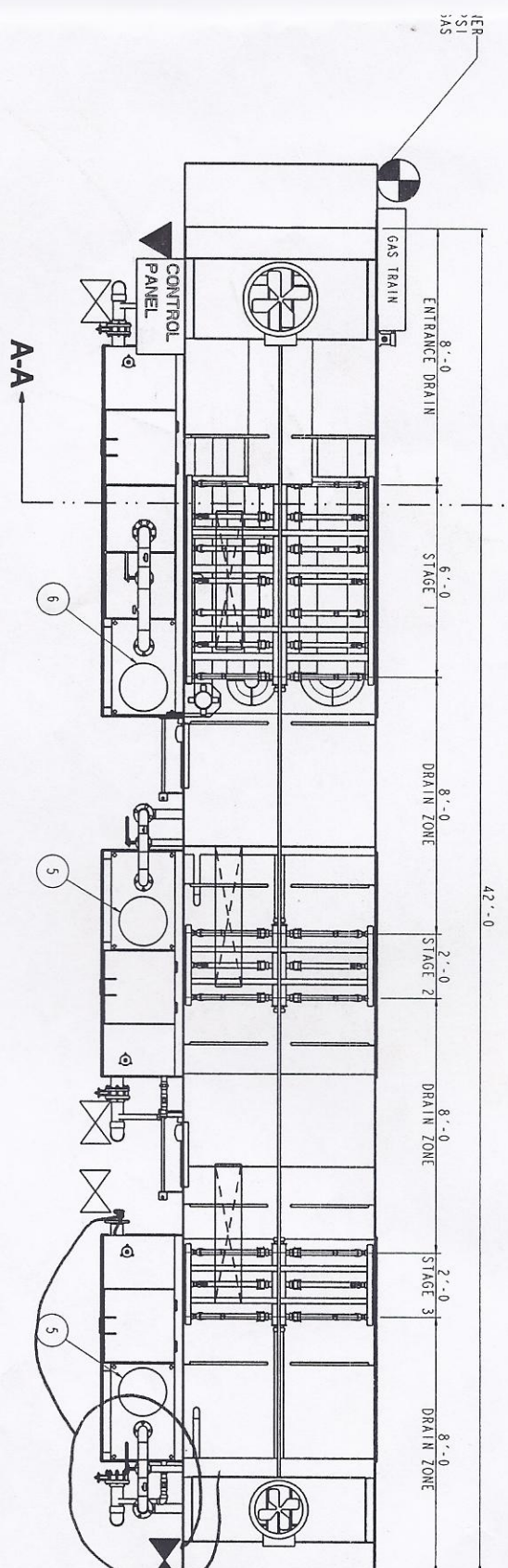
SEE SHIT. #S002 FOR COMPLETE
PART HANGING DETAILS
SCALE: 2X
TYPICAL SILHOUETTE OPENING



- NOTES:
- CONVEYOR SPECIFICATIONS:
 - MANUFACTURER: T.B.D.
 - TRACK TYPE: ENCLOSED
 - ATTACHMENT TYPE: STANDARD "H"
 - CONVEYOR SPEED: VARIABLE 3
 - PART SPECIFICATIONS:
 - DESCRIPTION: STEEL AND ALL
 - MAX PART SIZE: 24" W X 60" H
 - MAX PAR WEIGHT: 100 LBS.
 - COATING TYPE: POWDER
 - UTILITY REQUIREMENTS:
 - NATURAL GAS:
 - 4,000 CFH @ 5 PSI
 - INSURANCE CARRIER: FM
 - ELECTRICITY: 460VAC/3Ø/60HZ

VIEW A-A





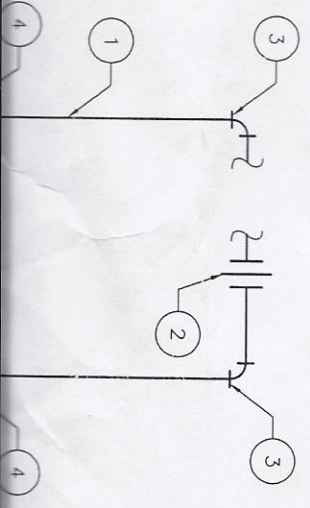
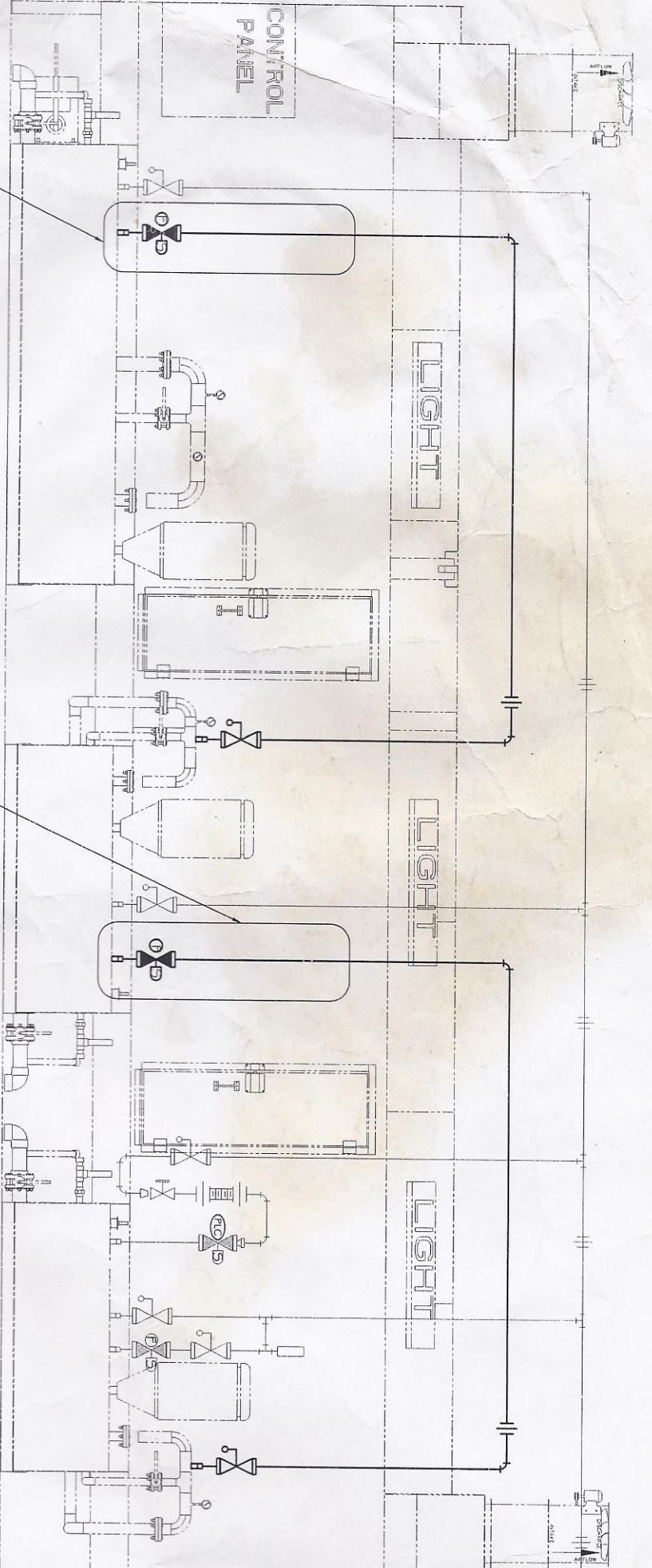
AGE 3
ISE
DATE
BY
REV
NO
DESCRIPTION

ELEVATION VIEW
SCALE 1/32

MAIN & SIDE TANK LENGTH STAGE 1
11'-6"

MAIN & SIDE TANK LENGTH STAGE 2
7'-0"

MAIN & SIDE TANK LENGTH STAGE 3
7'-0"



STAGE 1
CLEAN


STAGE 2
RINSE

STAGE 3
RINSE

SEE DETAIL A

SEE DETAIL A

SYMBOLS

 SOLENOID VALVE

8
7
6
5